

Ref: INS/L-5271/2019-2020(Y)

Date : 12/07/2019

ENQUIRY

Dear Sirs,

Please let us have your lowest Quotation for the following :

| Sl.No | Cat.No | Item Description | Make/Model | Item Qty | UOM |
|-------|--------|--|------------|----------|-----|
| 1 | | AS PER THE SOQ ENCLOSED FOR PROVIDING AND FIXING INTERNAL FIRE SIGNAGES AND EVACUATION PLAN FOR EACH FLOOR (Specifications Attached) | - | 1.00 | No. |

Remarks :

Note :

1. The bids shall be enclosed in an envelope , and due date sealed duly marked "Tender for _____" Ref No : _____. The bids should be addressed and to be mailed to "THE HEAD-PURCHASE". The bids are liable to be rejected if the sealed envelope is not addressed to "THE HEAD-PURCHASE" with Tender Ref No and Item Description and due date. The bids delivered in person shall be dropped in Purchase Section. If the bids are sent through courier or mail , it should reach by submission Date and Time and inStem will not be responsible for the delay.

2. DUE DATE FOR SUBMISSION OF QUOTATION AGAINST THIS ENQUIRY IS
25/07/2019 till 5.30 p.m.

3. QUOTATIONS RECEIVED AFTER THE DUE DATE SHALL BE REJECTED.

4. The Validity of your quotation should be for 60 days from the date.

5.All duties,taxes,surcharge and cess as currently applicable must be sated in your quotation,seperately.Otherwise your quote is liable to be rejected.

6.Your quotation should indicate delivery period & Warranty period.

7.Delivery to be made to our Stores.Please indicate charges,if any extra.Transit Insurance should be done upto inStem Stores.

8.If you are unable to supply the quality,specifications or brand as mentioned in our enquiry,Please state so and then offer alternative to quality/Specifications.

9.Payment :within one month after delivery & acceptance/satisfactory installation.

10.Please ensure that the enquiry number and the due date is superscribed on the envelope failing which your quotation is liable to be rejected.

11.Since we are a public funded research institution,we are exempted from paying Customs Duty(Except advolerum duty of 5% + 2% cess and CVD @4% vide Notification No.51/96 with latest amendments) and excise duty vide Notification No.10/97 CENTRAL EXCISE dated 01-03-1997 for all scientific equipments,technical instruments,equipments(including computers),their accessories,spares,consumables and software.Hence,please offer your prices taking this option into consideration.



Institute For Stem Cell Biology and Regenerative Medicine

Autonomous institute of the Department of Biotechnology, Government Of India



Ref: INS/L-5271/2019-2020(Y)


Date : 12/07/2019

12.If the item is covered under DGS&D rate contract,please quote the rate as per the DGS&D rate contract with xerox copy of the DGS&D order.

13.Any dispute or differences that may arise between the parties shall be referred to the sole arbitration of the Centre Director or his nominees.The decision of the arbitrator shall be final and binding on the parties.The venue for arbitration shall be Bangalore.The provisions of the Arbitration and Concillation Act,1996 as amended from time to time shall apply.The Courts in Bangalore shall have exclusive jurisdiction to deal with any or all disputes between the parties.

Yours faithfully

For and on behalf of Insitute For Stem Cell
Biology and Regenerative Medicine


Yesu R



GKVK, Bellary Road, Bangalore-560065,INDIA

Phone No. : 91-80-23666343/344/345/346

Fax : 91-80-23636662

Email Id: purchase@ncbs.res.in

Website : www.ncbs.res.in



Sub: Providing and Fixing internal Fire Signages for inStem Laboratory Building, Bangalore
Schedule of Quantities

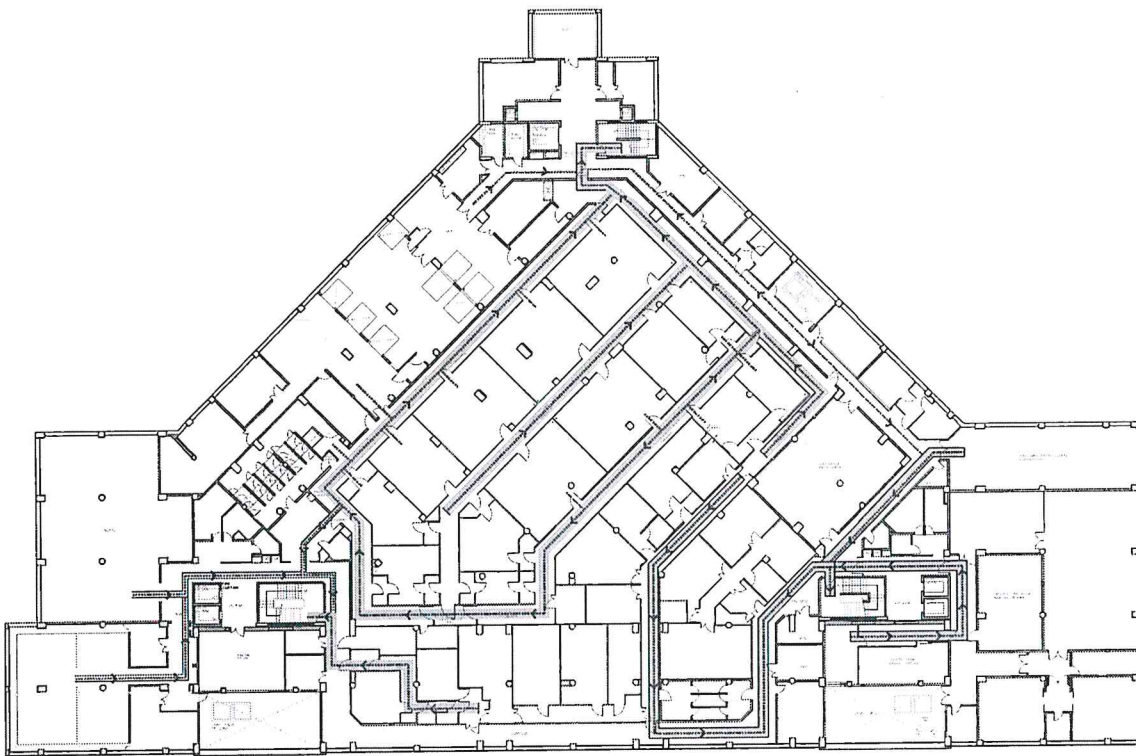
| Sl. No | Description of Materials | Unit | Qty |
|--------|---|------|-----|
| 1 | Providing and fixing of Fire Exit Sign Boards made using 8mm thick clear acrylic sheet of size 300 x 125mm with text and pictos printed on coloured vinyl sticker. The board to be fixed in position either on ceiling using SS cord or on Aluminium frames/on wall/glass using suitable brackets/two way tape, based on site condition. Edges of acrylic to be grinded smooth and polished. Complete with all necessary accessories including making holes for fixing SS cords etc, as per instructions of Officer - Incharge and reference drawing No. NCBS/inStem/Fire signs-42, as listed below: | | |
| 1-a | Double side Sign board, ceiling mounted, using SS cords | Nos | 95 |
| 1-b | Single side Sign boards wall mounted / or aluminium frames using SS brackets | Nos | 17 |
| 1-c | Single side Sign boards fixed on glass using two way tape | Nos | 6 |
| 2 | Providing and fixing Evacuation Floor Plans , printed on A2 size photo paper,matte finish, and pasted without any bubbling between two nos. of 4 mm thick clear acrylic sheets (sandwich) of overall size 420 mm x 600 mm (A2 size), all fixed to the RCC column / wall, based on site condition, complete with all accessories using 4 nos of 20 mm SS studs, as per instructions of Officer- Incharge and reference Drawing No. NCBS/inStem/Evacuation plan/43 - 50 | Nos | 27 |





LOWER BASEMENT FLOOR LAYOUT PLAN

1. When evacuation signal sounds (pulsating tone), leave your area via evacuating route.
2. In case of emergency do not use elevator, use only the stairs. Exit the building using the nearest exit.
3. Do not re-enter unless authorised to do so.
4. Proceed to the designated outside assembly area.
5. Keep safe distance from building and emergency operations.
6. Assist person with disabilities.
7. In case of emergency call these extension nos. - 6425, 6426, 6011, 6022.

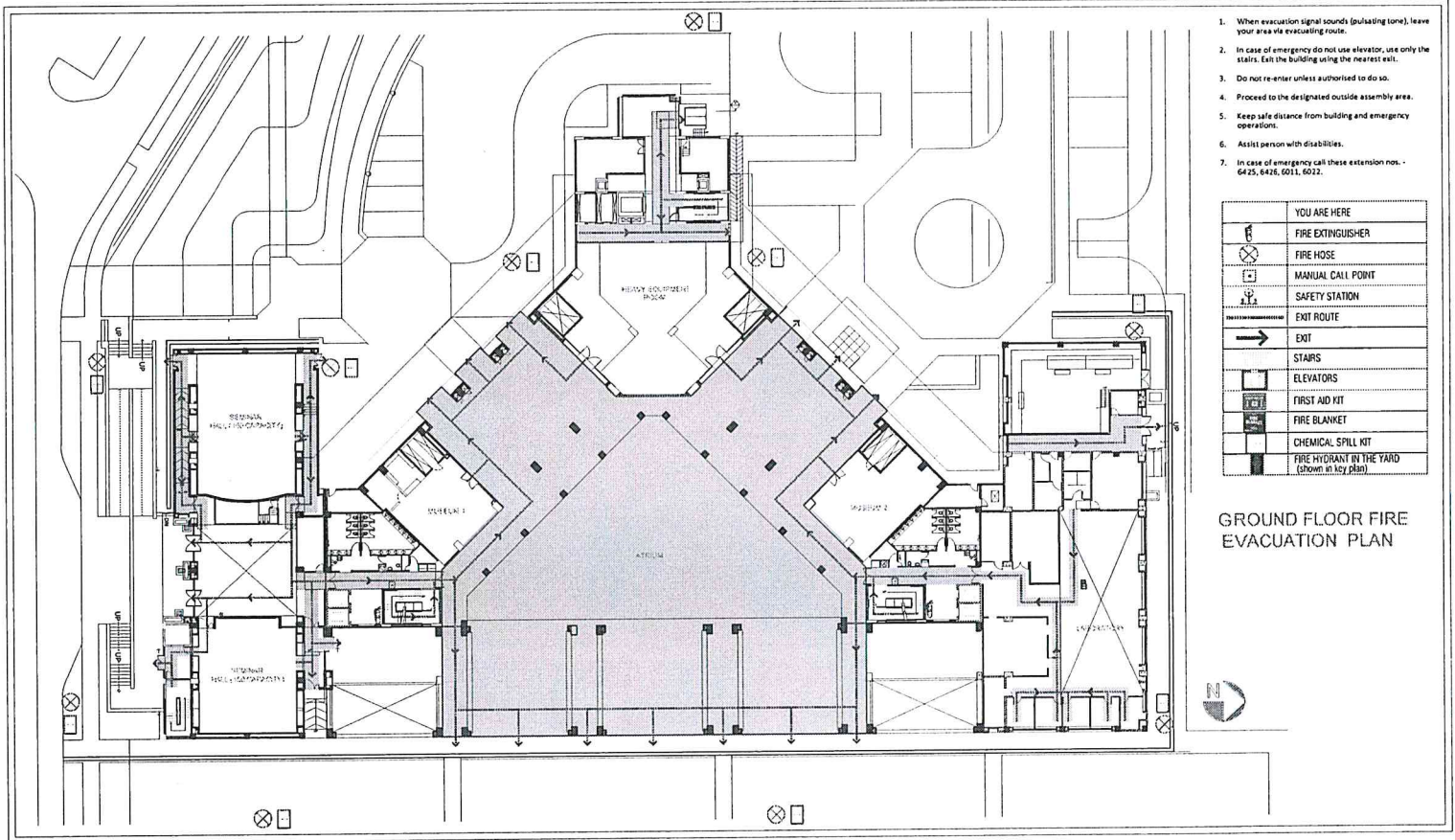


LOWER BASEMENT FLOOR PLAN

| | |
|--|---|
| | YOU ARE HERE |
| | FIRE EXTINGUISHER |
| | FIRE HOSE |
| | MANUAL CALL POINT |
| | SAFETY STATION |
| | EXIT ROUTE |
| | EXIT |
| | STAIRS |
| | ELEVATORS |
| | FIRST AID KIT |
| | FIRE BLANKET |
| | FIRE HYDRANT IN THE YARD (shown in key plan) |
| | FIRE CURTAIN |

LOWER BASEMENT FLOOR -FIRE EVACUATION PLAN



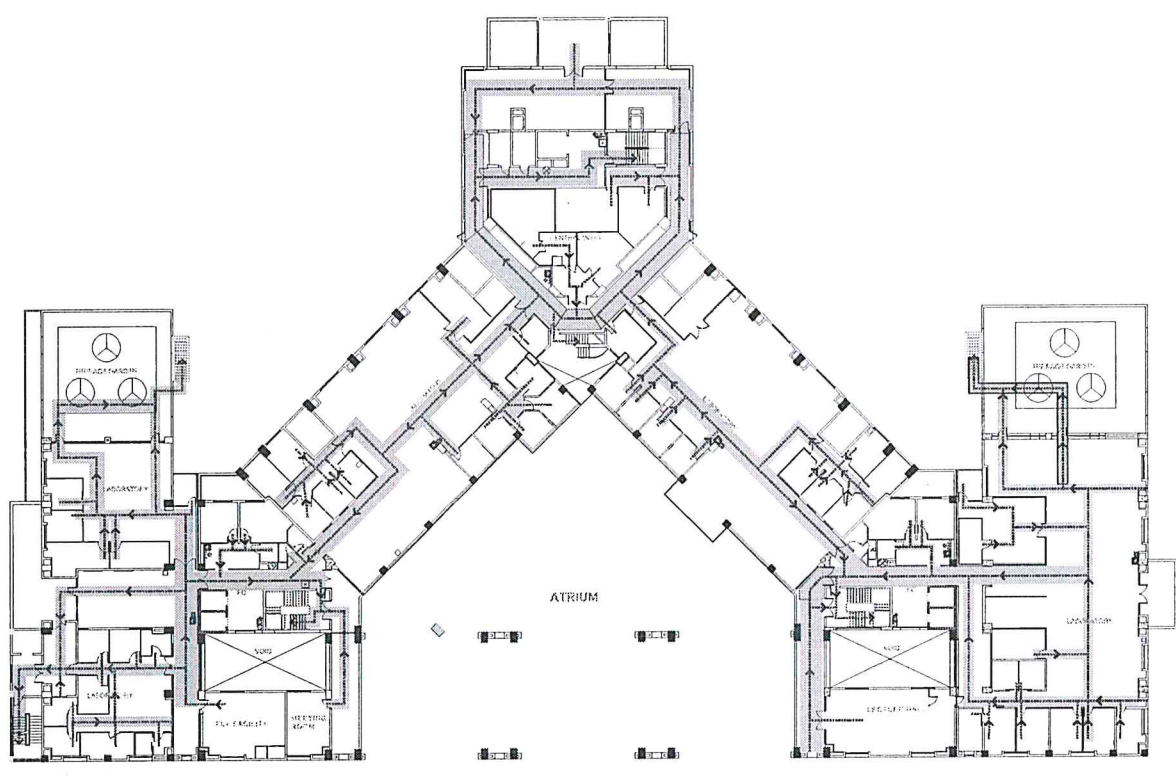


1. When evacuation signal sounds (pulsating tone), leave your area via evacuating route.
2. In case of emergency do not use elevator, use only the stairs. Exit the building using the nearest exit.
3. Do not re-enter unless authorised to do so.
4. Proceed to the designated outside assembly area.
5. Keep safe distance from building and emergency operations.
6. Assist person with disabilities.
7. In case of emergency call these extension nos. - 6425, 6426, 6011, 6012.

| | |
|--|---|
| | YOU ARE HERE |
| | FIRE EXTINGUISHER |
| | FIRE HOSE |
| | MANUAL CALL POINT |
| | SAFETY STATION |
| | EXIT ROUTE |
| | EXIT |
| | STAIRS |
| | ELEVATORS |
| | FIRST AID KIT |
| | FIRE BLANKET |
| | CHEMICAL SPILL KIT |
| | FIRE HYDRANT IN THE YARD (shown in isy plan) |

GROUND FLOOR FIRE EVACUATION PLAN



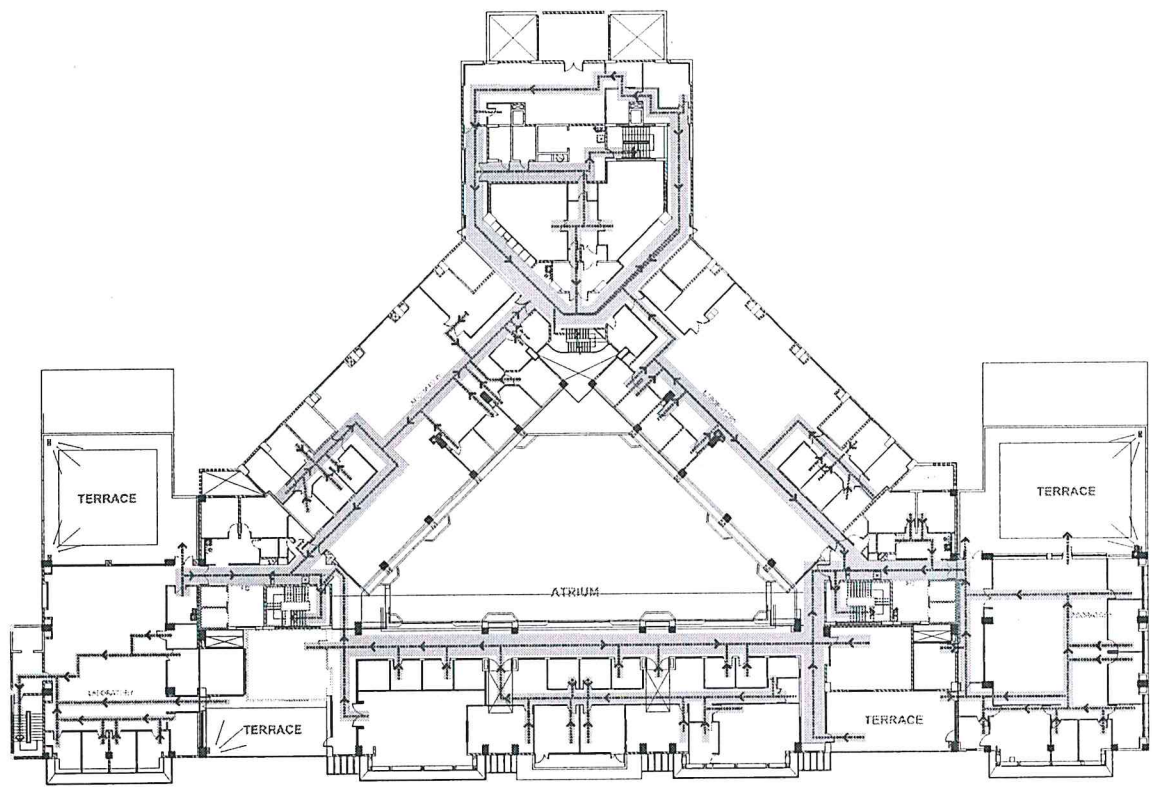


1. When evacuation signal sounds (pulsating tone), leave your area via evacuating route.
2. In case of emergency do not use elevator, use only the stairs. Exit the building using the nearest exit.
3. Do not re-enter unless authorised to do so.
4. Proceed to the designated outside assembly area.
5. Keep safe distance from building and emergency operations.
6. Assist person with disabilities.
7. In case of emergency call these extension nos. - 6425, 6426, 6011, 6022.

| | |
|--|---|
| | YOU ARE HERE |
| | FIRE EXTINGUISHER |
| | FIRE HOSE |
| | MANUAL CALL POINT |
| | SAFETY STATION |
| | EXIT ROUTE |
| | EXIT |
| | STAIRS |
| | ELEVATORS |
| | FIRST AID KIT |
| | FIRE BLANKET |
| | FIRE HYDRANT IN THE YARD (Shown in key plan) |
| | FIRE CURTAIN |

FIRST FLOOR FIRE EVACUATION PLAN



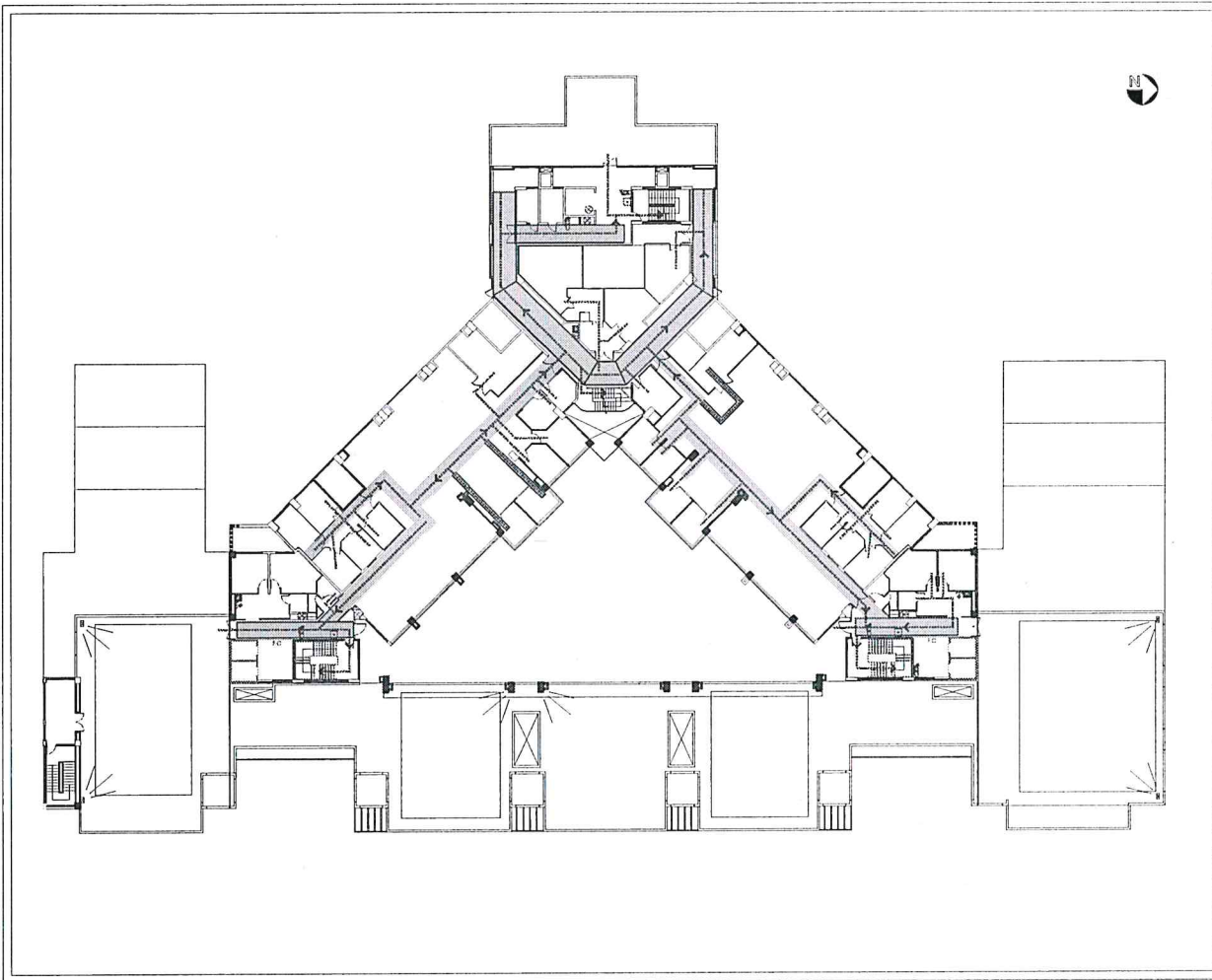


1. When evacuation signal sounds (pulsating tone), leave your area via evacuating route.
2. In case of emergency do not use elevator, use only the stairs. Exit the building using the nearest exit.
3. Do not re-enter unless authorised to do so.
4. Proceed to the designated outside assembly area.
5. Keep safe distance from building and emergency operations.
6. Assist person with disabilities.
7. In case of emergency call these extension nos. - 6425, 6426, 6011, 6022.

| | |
|--|---|
| | YOU ARE HERE |
| | FIRE EXTINGUISHER |
| | FIRE HOSE |
| | MANUAL CALL POINT |
| | SAFETY STATION |
| | EXIT ROUTE |
| | EXIT |
| | STAIRS |
| | ELEVATORS |
| | FIRST AID KIT |
| | FIRE BLANKET |
| | FIRE HYDRANT IN THE YARD (Shown in key plan) |
| | FIRE CURTAIN |

SECOND FLOOR FIRE EVACUATION PLAN





1. When evacuation signal sounds (pulsating tone), leave your area via evacuating route.
2. In case of emergency do not use elevator, use only the stairs. Exit the building using the nearest exit.
3. Do not re-enter unless authorised to do so.
4. Proceed to the designated outside assembly area.
5. Keep safe distance from building and emergency operations.
6. Assist person with disabilities.
7. In case of emergency call these extension nos. - 6425, 6426, 6011, 6022.

| | |
|--|---|
| | YOU ARE HERE |
| | FIRE EXTINGUISHER |
| | FIRE HOSE |
| | MANUAL CALL POINT |
| | SAFETY STATION |
| | EXIT ROUTE |
| | EXIT |
| | STAIRS |
| | ELEVATORS |
| | FIRST AID KIT |
| | FIRE BLANKET |
| | FIRE HYDRANT IN THE YARD (Shown in lobby plan) |
| | FIRE CURTAIN |

THIRD FLOOR FIRE EVACUATION PLAN

